



GAT MONTHLY MEMBERSHIP PROGRESS REPORT

Results as of: 11/30/2021

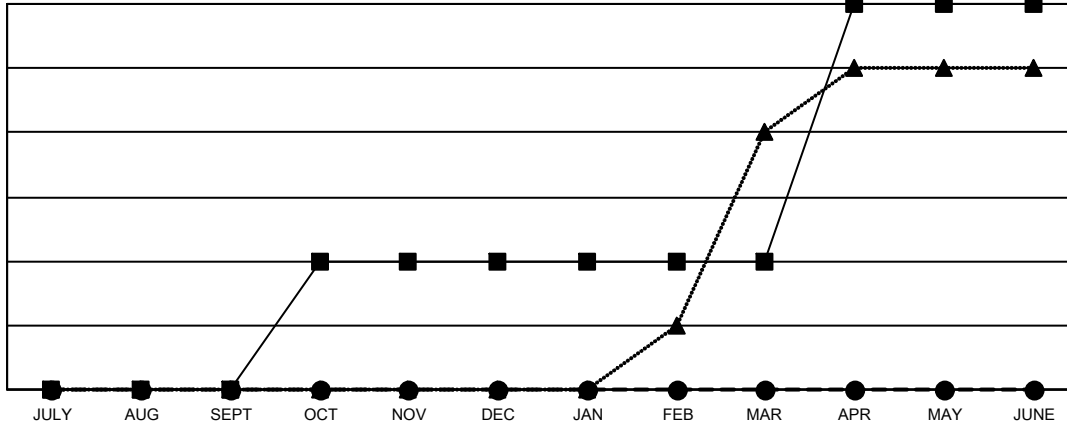
Multiple District 202

LOCATION: NEW ZEALAND

Clubs			
RESULTS FOR 2021-2022			
QUARTER	NEW CLUB GOAL	NEW CLUBS	DROPPED CLUBS
JULY/AUG/SEPT	0	0	5
OCT/NOV/DEC	2	0	0
JAN/FEB/MAR	0	0	0
APR/MAY/JUNE	4	0	0

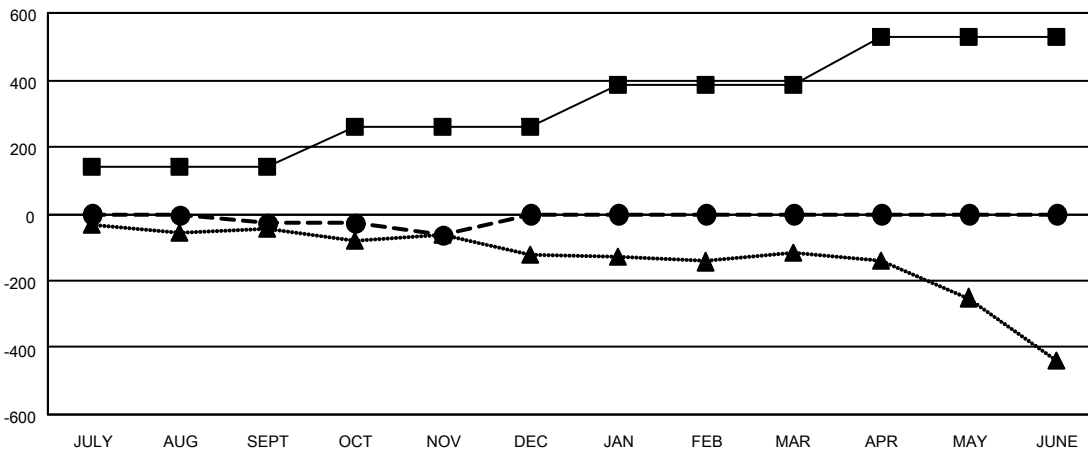
Members			
RESULTS FOR 2021-2022			
QUARTER	MEMBER GROWTH NET GOAL	MEMBER GROWTH ACTUAL	DROPPED MEMBERS ACTUAL (including transfers)
JULY/AUG/SEPT	138	180	165
OCT/NOV/DEC	122	127	147
JAN/FEB/MAR	127	0	0
APR/MAY/JUNE	142	0	0

GOALS AND ACTUAL NEW CLUBS CUMULATIVE



- - CURRENT YEAR GOALS FOR NEW CLUBS
- - CURRENT YEAR ACTUAL NEW CLUBS
- ▲ - LAST YEAR ACTUAL NEW CLUBS

GOALS AND ACTUAL MEMBERS CUMULATIVE



- - MEMBER GROWTH NET GOAL
- - MEMBER GROWTH ACTUAL
- ▲ - LAST YEAR MEMBERSHIP ACTUAL

DROPPED CLUBS: 5	134 CLUBS OF 323 ADDED 1 OR MORE NEW MEMBERS	GENDER DISTRIBUTION
DROPPED MEMBERS	CLICK HERE FOR CUMULATIVE MEMBERSHIP DATA	MALE 5,763 (68.31%)
DECEASED 53		FEMALE 2,673 (31.68%)
CLUB CANCELLED 0		NON BINARY 1 (0.01%)
OTHER 259		PREFER NOT TO ANSWER 0 (0.00%)
TOTAL 312		TOTAL FAMILY UNIT MEMBERS 752
		FAMILY MEMBERS PAYING HALF DUES 379